

WaterSpotter™ Probe Sump Sensor

Liquid Level Sensor | Rated 9-12VDC, 500mA Maximum

PROBE SUMP SENSOR ONLY (USE WITH ALDERON™ ALARM PANELS)



Leading Edge Control Products

TECHNICAL DATA SHEET

DESCRIPTION OF OPERATION

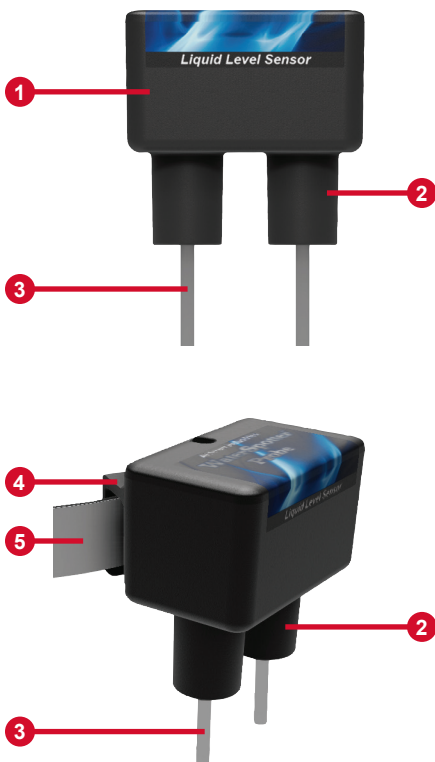


The WaterSpotter™ Probe Sump Sensor is a reliable liquid level sensor that can be used in a wide variety of applications, including but not limited to: sumps, water tanks, drain pans, and more. Use only with Alderon™ alarm panel monitoring systems, rated 9-12VDC.

The sensor is attached to the discharge pipe in a sump basin, detects water at the preset level, and the solid state circuitry is encapsulated in epoxy to ensure a waterproof sensor. Two stainless steel probes are located on the bottom of the sensor and will not rust. The sensor works with distilled and condensate water. The enclosure includes a pipe clamp bracket to securely fasten to a pipe with included stainless steel pipe clamp to ensure proper detection at the preset level without slipping.

The sensor is wired to the terminal block on an Alderon™ alarm panel. An alarm condition will occur when water touches the two probes on the sensor, during which the red alarm LED will illuminate, buzzer will annunciate, and the auxiliary contacts will activate on the alarm panel. The alarm condition will stay on until the water recedes below the two probes on the sensor. After a high liquid level event occurs, completely wipe off the probes before putting back into service. Connect multiple sensors (signaling device) for zone area protection.

STANDARD FEATURES



(1) **Sensor Housing** - Solid state circuitry is encapsulated in epoxy to ensure a waterproof sensor.

(2) **Probe Stabilizers** - Two probe stabilizers are part of the enclosure to keep them rigid from inside the sensor housing to the monitoring area for a reliable liquid level sensor.

(3) **Probes** - Two stainless steel probes on the bottom of the sensor detect water once the water is touching both probes. The detection level is based on the mounting location at the preset level in the monitoring area per application.

(4) **Pipe Clamp Bracket** - Part of the enclosure, used to mount the sensor to a pipe.

(5) **Stainless Steel Pipe Clamp** - Attaches to the pipe clamp bracket and secures the WaterSpotter™ sump sensor to a pipe at the desired mounting location.

(6) **Sensor Cable (not shown)** - PVC, 22 gauge, and 2-conductor cable connects the sensor to the terminals on an Alderon™ alarm panel. Rated 9-12VDC and 500mA maximum.

SPECIFICATIONS

WaterSpotter™ Probe Sump Sensor

Electrical
9-12VDC

Operating Current
3mA

Switching Current
500mA maximum

Probes
Stainless Steel

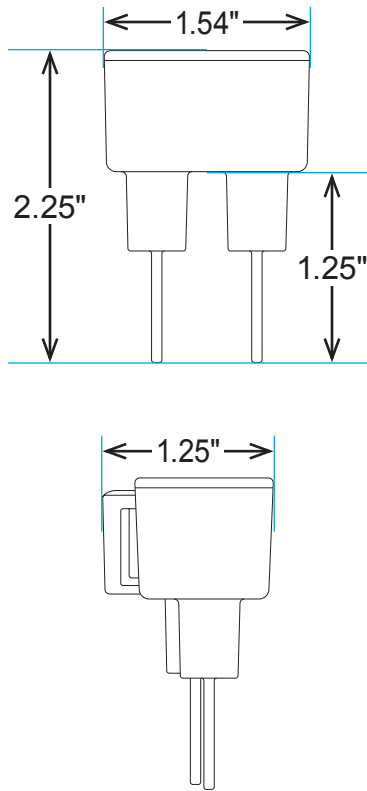
Detection Level
Preset level on discharge pipe in sump basin

Cable Type
PVC, 22 gauge, 2-conductor, 15-feet
(custom lengths available)

Three-Year Limited Warranty

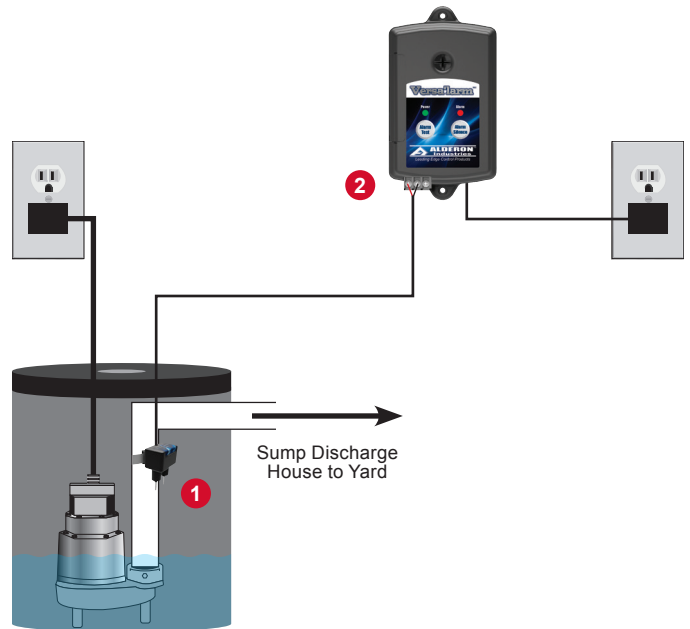
CAUTION: Connect ONLY to Alderon™ alarm panel monitoring systems.

MECHANICAL DRAWING



INSTALLATION EXAMPLE

- 1) Mount the WaterSpotter™ sump sensor on the discharge pipe in a sump basin.
- 2) Wire the sensor to the terminal block on the Alderon™ Versa'larm™ alarm panel and plug alarm into a standard 120VAC wall outlet.



ORDERING INFORMATION

For a complete list of standard products with pricing, refer to the current year price sheet or visit alderonind.com for more information.

PART NUMBER	DESCRIPTION (Alarm Panels include: Auto Reset, Battery Backup, and Auxiliary Contacts)
7009	WaterSpotter™ Probe Sump Sensor, 15' Cable, Stainless Steel Pipe Clamp
VERSA'LARM™ INDOOR ALARMS and ACCESSORIES EXPANDED APPLICATIONS	
7013	VersAlarm™ 1-Zone Alarm (Alarm Panel Only)
7930	Versa'larm™ 2-Zone Sump/Flood Alarm (Alarm Panel Only)
7008	WaterSpotter™ Flood Sensor, AWS Series, 15' Cable
7933	Strobe Beacon, 6-12VDC