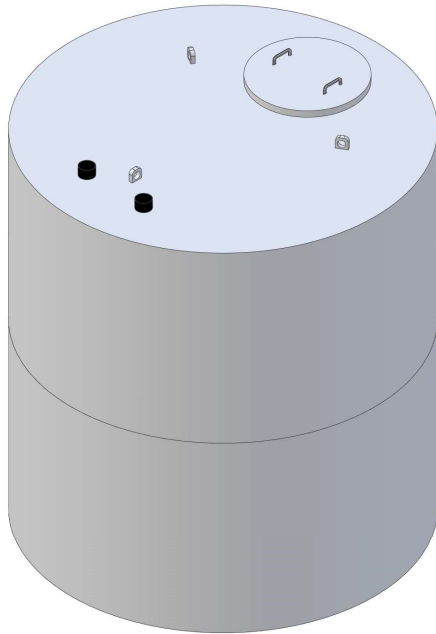
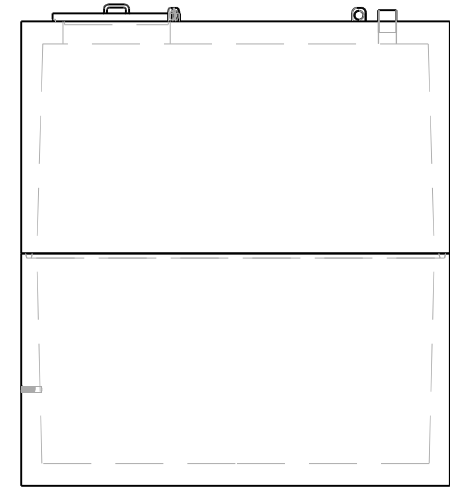
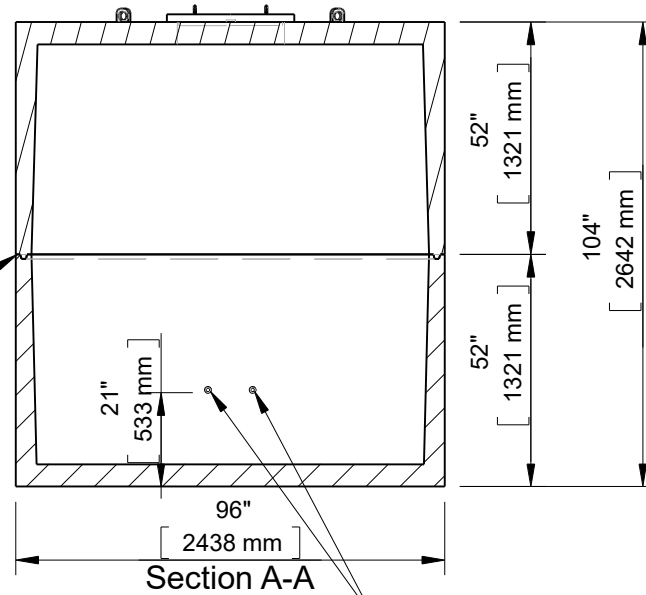




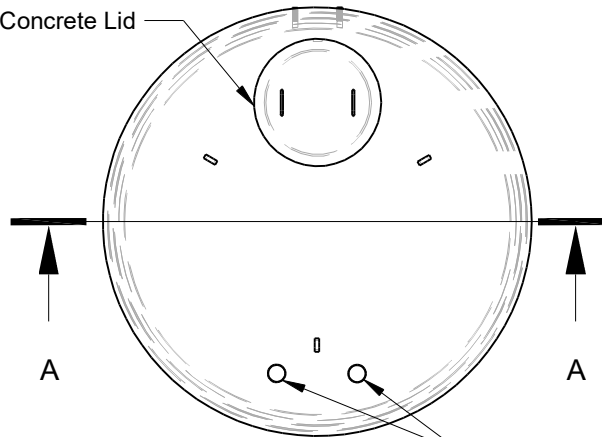
8 Ft. Diameter 2000 Gallon 1MH Cistern - Holding
Requires Concrete Extensions (11020H)



1" x1" Butyl Tape Seal

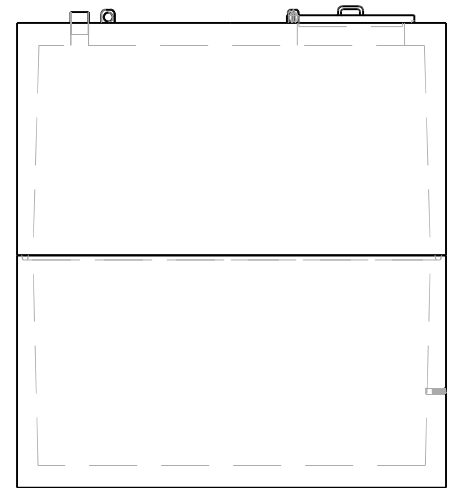


24" I.D. Concrete Lid



Optional (1 or 2) 1-1/4" Brass FIPT Couplers

(2) 4" ABS Couplers



This drawing is the property of Alberta Wilbert Sales Ltd. There is no guarantee or representation to the user as to the suitability or reliability of this data for any purpose. The user accepts the data "as is" and assumes all risks associated with its use.

Edmonton

16910-129 Ave. NW
 Edmonton, AB
 T5V 1L1
 Toll Free: 1-800-232-7385
 Bus: (780-447-2222)

Calgary

4315-58 Ave. S.E.
 Calgary, AB
 T2C 1Y3
 Bus: (403) 230-1666
 Fax: (403) 276-4176

Total Capacity: 2000 Imp. Gal. (9080 L)
 Gallons / Inch: 21.5 Gal. / Inch (97.6 L / Inch)
 Material: Type 50/HS Concrete
 Weight: 16000Lbs. / 7258Kg.
 Model: 8-2000
 B66- CSA approved for up to 3 meters of burial.

Checked by	Item 11020H	Date 11.27.22	Scale
File name	2000 Gallon 1MH Cistern - Holding Concrete Extensions (11020H)		
For Discussion Only.			Drawn by M.D.