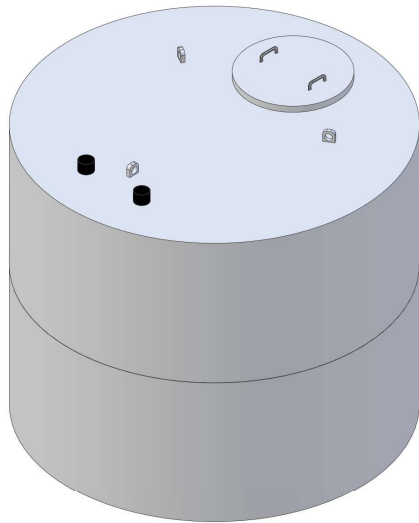
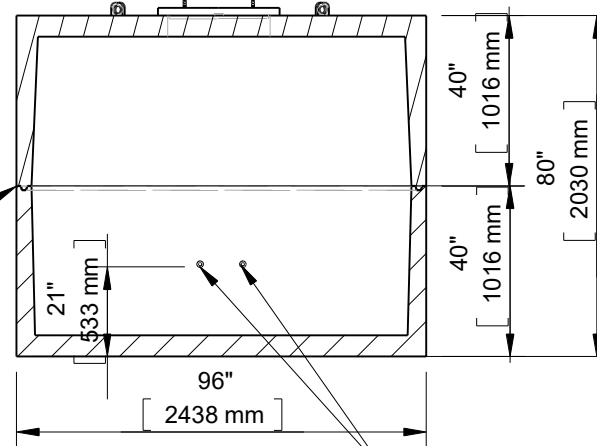




1500 Gallon 8Ft. Diameter 1MH Cistern - Holding Concrete Extensions (11048H)



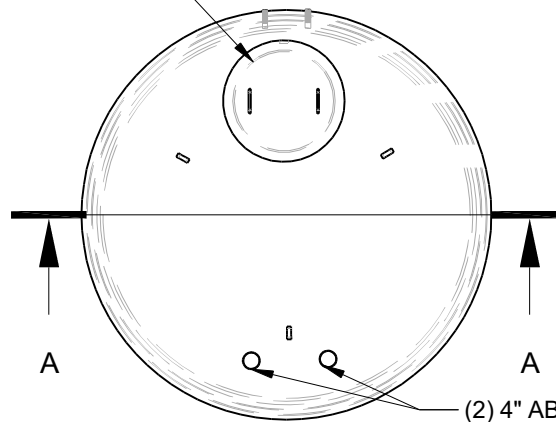
1" x 1" Butyl Rubber Tape Seal



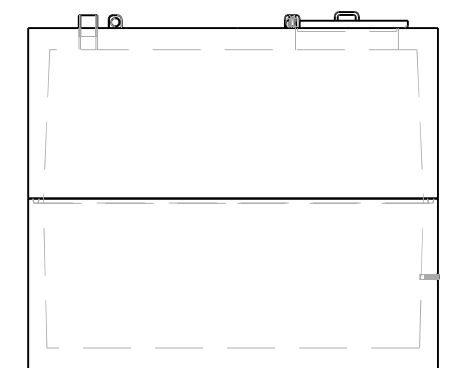
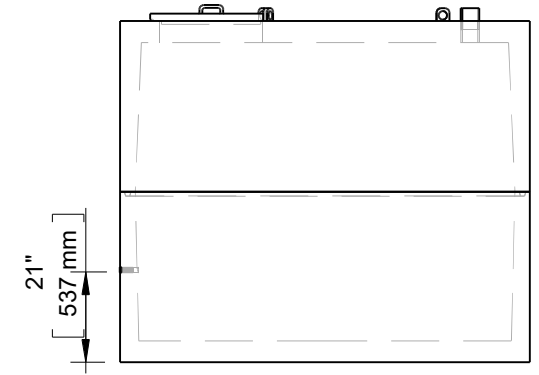
Section A-A

Optional (2) 1-1/4" Brass FIPT Couplers

24" I.D. Concrete Lid



(2) 4" ABS Couplers



This drawing is the property of Alberta Wilbert Sales Ltd. There is no guarantee or representation to the user as to the suitability or reliability of this data for any purpose. The user accepts the data "as is" and assumes all risks associated with its use.

Edmonton
16910-129 Ave. NW
Edmonton, AB
T5V 1L1
Toll Free: 1-800-232-7385
Bus: (780-447-2222)

Calgary
4315-58 Ave. S.E.
Calgary, AB
T2C 1Y3
Bus: (403) 230-1666
Fax: (403) 276-4176

Total Capacity: 1500 Imp. Gal. (6810 L)
Gallons / Inch: 21.7 Gal. / Inch (98.7 L / Inch)
Material: Type 50/HS Concrete
Weight: 14,700Lbs. / 6668Kg.
Model: 8-1500
B66- CSA approved for up to 3 meters of burial.

Checked by	Item	Date	Scale
	11048H	11.27.22	
File name 1500 Gallon 8Ft. Diameter 1MH Cistern - Holding Concrete Extensions (11048H)			
For Discussion Only.			Drawn by M.D.