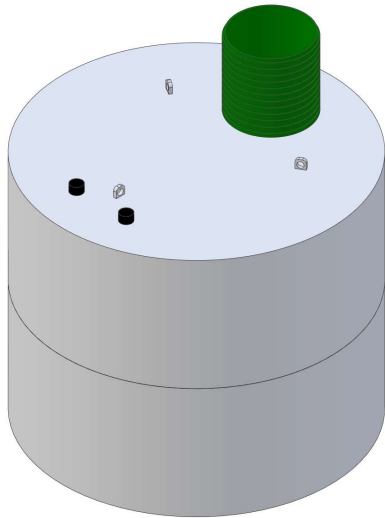
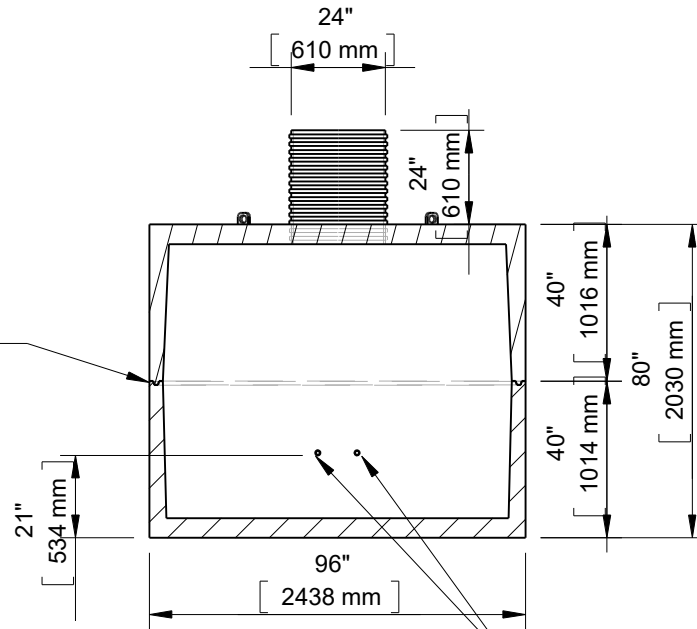




**8Ft. Diameter 1500 Gallon
Cistern - Holding
(11048CG)**



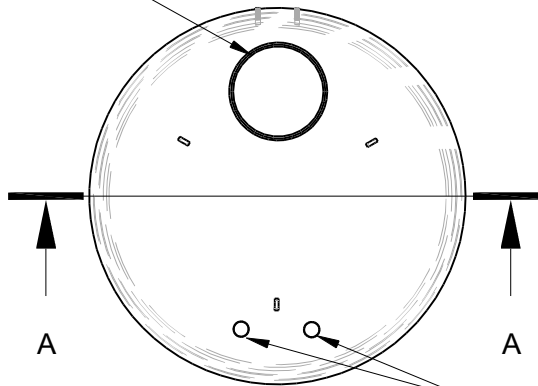
1" x 1" Butyl
Tape Seal



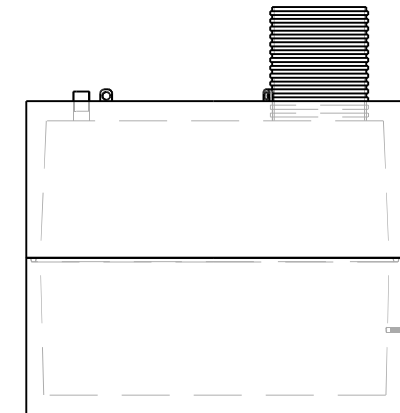
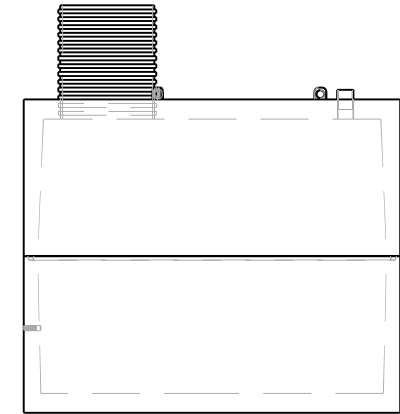
Section A-A

Optional (1 or 2) 1-1/4" Brass
Female Couplers

24" Ultra - Rib PVC



(2) 4" ABS Couplers



This drawing is the property of Alberta Wilbert Sales Ltd.
There is no guarantee or representation to the user as to the suitability
or reliability of this data for any purpose. The user accepts the data
"as is" and assumes all risks associated with its use.

Edmonton
16910-129 Ave. NW
Edmonton, AB
T5V 1L1
Toll Free: 1-800-232-7385
Bus: (780-447-2222

Calgary
4315-58 Ave. S.E.
Calgary, AB
T2C 1Y3
Bus: (403) 230-1666
Fax: (403) 276-4176

Total Capacity: 1500 Imp. Gal. / (6810 L)
Gallons / Inch: 21.7 Gal /Inch (98.7 L / Inch)
Material: Concrete Type 50 / HS
Weight: 13,600 Lbs. / 6169Kg.
Model: 8-1500
B66- CSA approved for up to 3 meters of burial.

Checked by	Item	Date	Scale
	11048CG	11.26.22	

File name: 8Ft. Diameter 1500 Gallon Cistern - Holding (11048CG)

For Discussion Only.

Drawn by M.D.