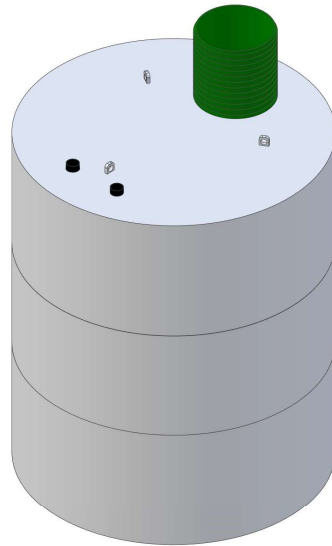
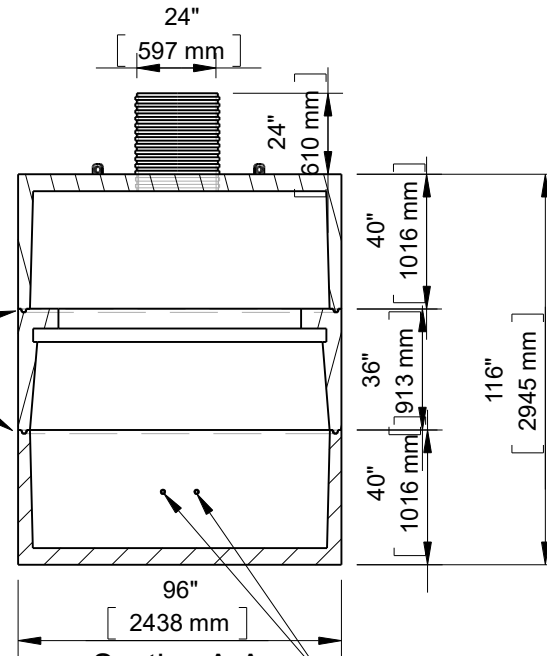




**8 Ft. Diameter 2300 Gallon 1GMH  
Cistern - Holding  
(11052CG)**



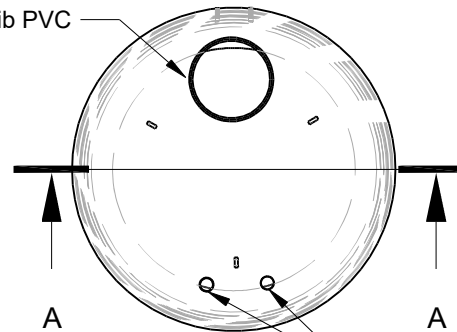
1" x 1" Butyl Tape  
Seal



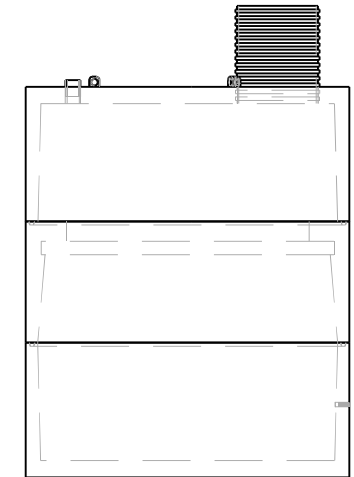
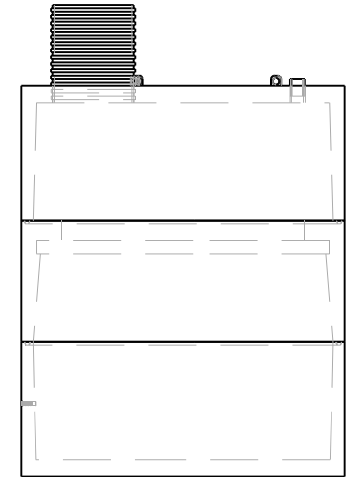
**Section A-A**

Optional (1 or 2) 1-1/4" Brass FIPT Couplers

24" Ultra-Rib PVC



(2) 4" ABS Couplers



This drawing is the property of Alberta Wilbert Sales Ltd.  
There is no guarantee or representation to the user as to the suitability  
or reliability of this data for any purpose. The user accepts the data  
"as is" and assumes all risks associated with its use.

**Edmonton**

16910-129 Ave. NW  
Edmonton, AB  
T5V 1L1  
Toll Free: 1-800-232-7385  
Bus: (780-447-2222

**Calgary**

4315-58 Ave. S.E.  
Calgary, AB  
T2C 1Y3  
Bus: (403) 230-1666  
Fax: (403) 276-4176

Total Capacity: 2300 Imp. Gal. (10442 L)  
Gallons / Inch: 21.9 Gal. / Inch (99.6 L / Inch)  
Material: Type 50/HS Concrete  
Weight: 17600Lbs. / 7983Kg.  
Model: 8-2300  
B66- CSA approved for up to 3 meters of burial.

Checked by	Item 11052CG	Date 11.26.22	Scale
File name	8 Ft. Diameter 2300 Gallon 1GMH Cistern - Holding (11052CG)		
For Discussion Only.			Drawn by M.D.