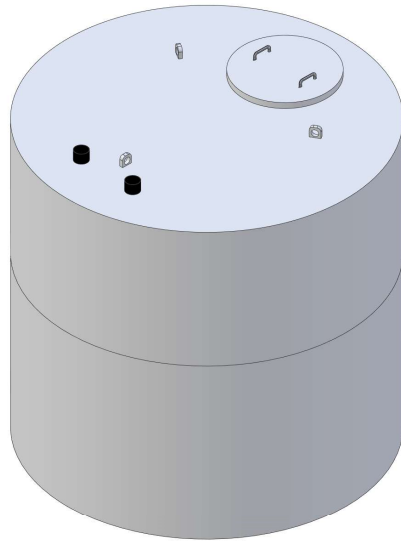
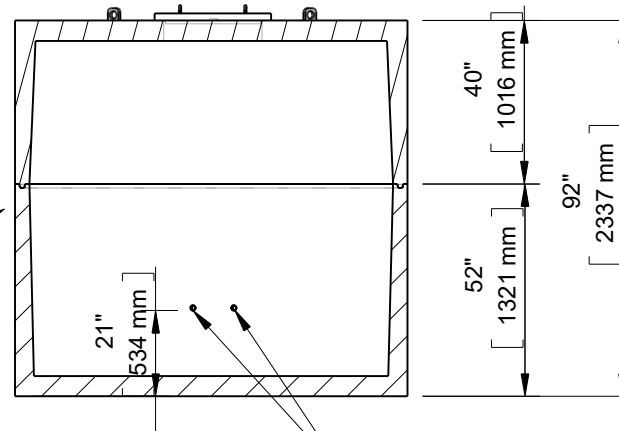




**8Ft. Diameter 1800 Gallon 1MH  
Requires Concrete Extensions  
(11050H)**



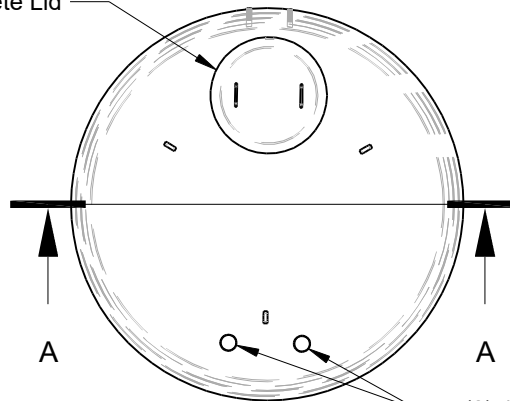
1" x 1" Butyl  
Rubber Seal



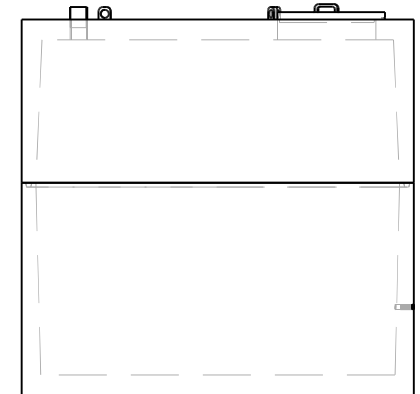
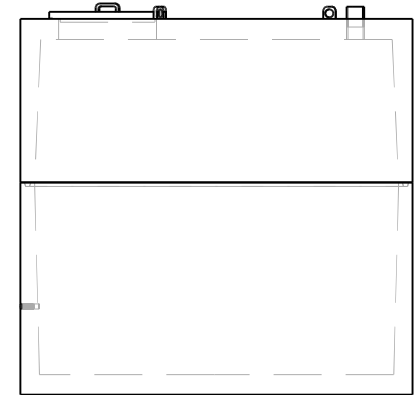
Optional (2) 1-1/4"  
Brass FIPT Couplers

**Section A-A**

24" I.D. Concrete Lid



(2) 4" ABS Couplers



This drawing is the property of Alberta Wilbert Sales Ltd.  
There is no guarantee or representation to the user as to the suitability  
or reliability of this data for any purpose. The user accepts the data  
"as is" and assumes all risks associated with its use.

**Edmonton**  
16910-129 Ave. NW  
Edmonton, AB  
T5V 1L1  
Toll Free: 1-800-232-7385  
Bus: (780-447-2222

**Calgary**  
4315-58 Ave. S.E.  
Calgary, AB  
T2C 1Y3  
Bus: (403) 230-1666  
Fax: (403) 276-4176

Total Capacity: 1800 Imp. Gal. (8172 L)  
Gallons / Inch: 22.2 Gal. / Inch (100.9 L / Inch)  
Material: Type 50/HS Concrete  
Weight: 14700Lbs / 6668Kg.  
Model: 8-1800  
B66- CSA approved for up to 3 meters of burial.

Checked by	Item	Date	Scale
	11050H	11.26.22	
File name		8Ft. Diameter 1800 Gallon 1MH Concrete Extensions (11050H)	
For Discussion Only.			Drawn by M.D.