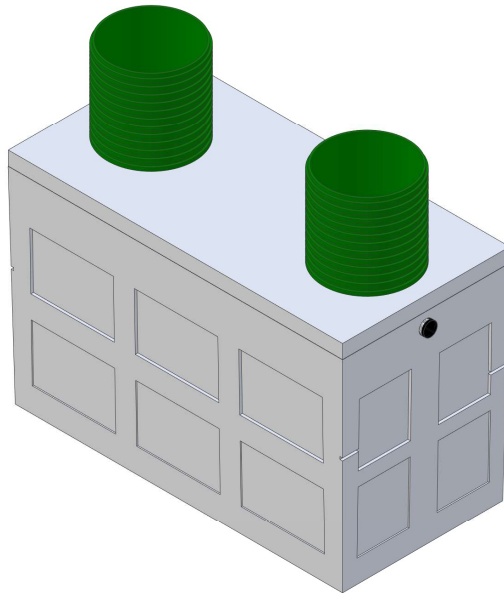


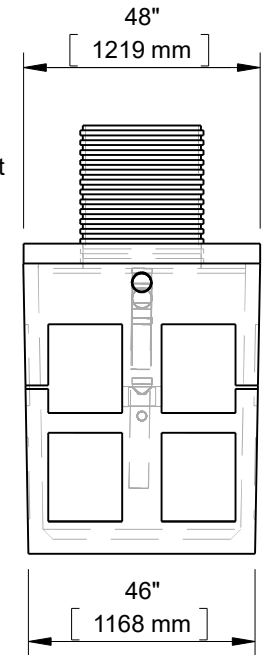
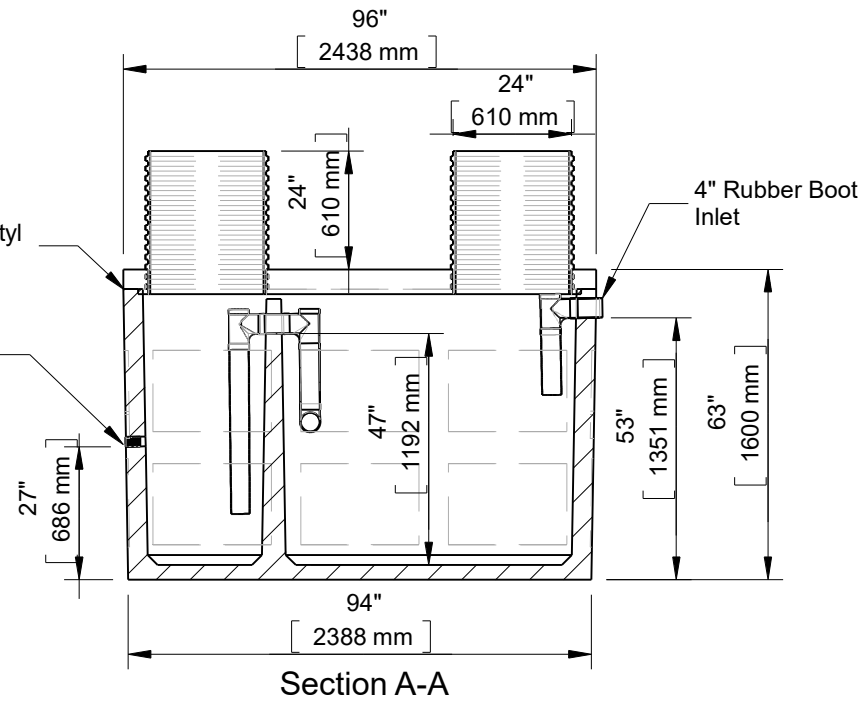


# 700 Gallon 2 GMH Septic Tank (11010AG)

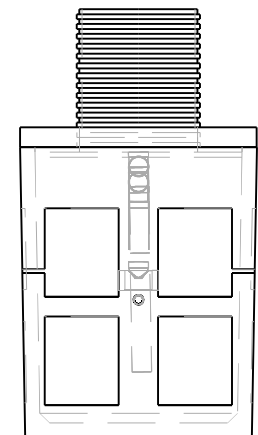
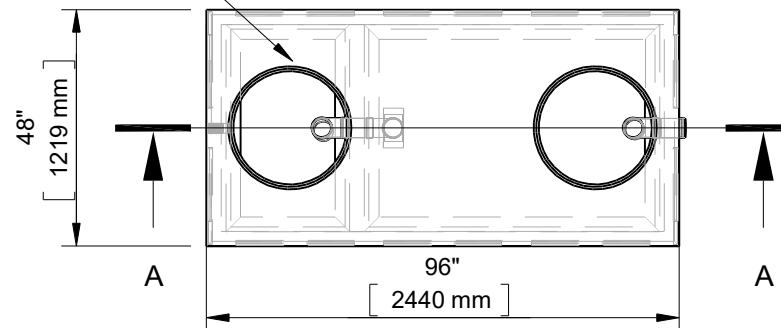


1/2" x 1-1/2" Butyl Tape Seal

2" Brass FIPT Coupler



Ultra-Rib PVC



This drawing is the property of Alberta Wilbert Sales Ltd.  
There is no guarantee or representation to the user as to the suitability or reliability of this data for any purpose. The user accepts the data "as is" and assumes all risks associated with its use.

## Edmonton

16910-129 Ave. NW  
Edmonton, AB  
T5V 1L1  
Toll Free: 1-800-232-7385  
Bus: (780-447-2222  
Fax: (780) 447-1984

## Calgary

4315-58 Ave. S.E.  
Calgary, AB  
T2C 1Y3  
Bus: (403) 230-1666  
Fax: (403) 276-4176

Number of Bedrooms: N/A  
Working Capacity: 420 Imp Gal. / 1909 L  
Pump Chamber: 165 Imp Gal. / 750 L  
Weight: 6850lbs / 3020Kg  
Dosing Volume: 4.1 gal/ inch

CSA approved for up to 3 meters of burial.  
(1) 2" Brass FIPT Coupler

Checked by

Item  
11010AG

Date  
11.26.22

Scale

File name

700 Gallon 2 GMH Septic Tank  
(11010AG)

For Discussion Only.

Drawn by M.D.