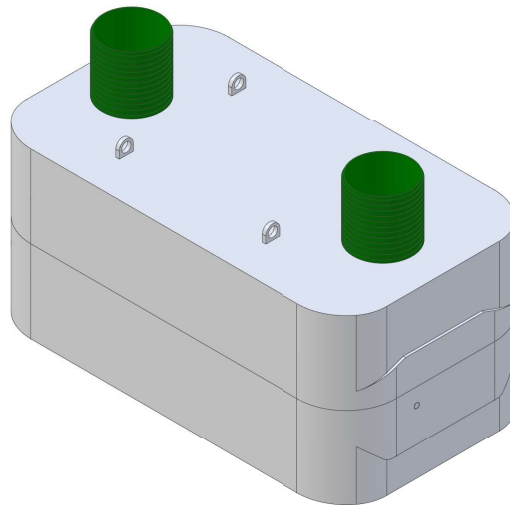


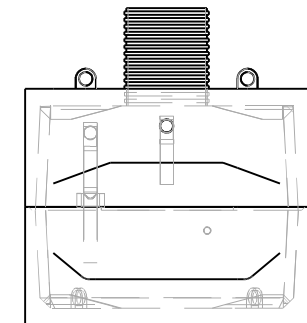
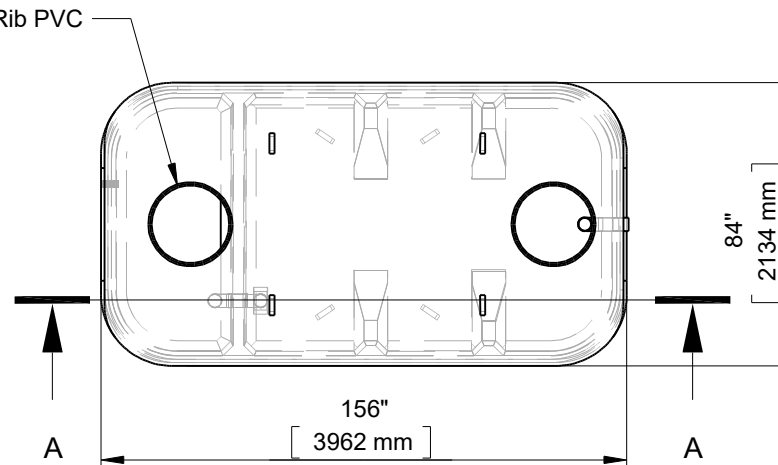
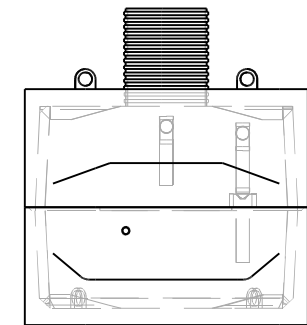
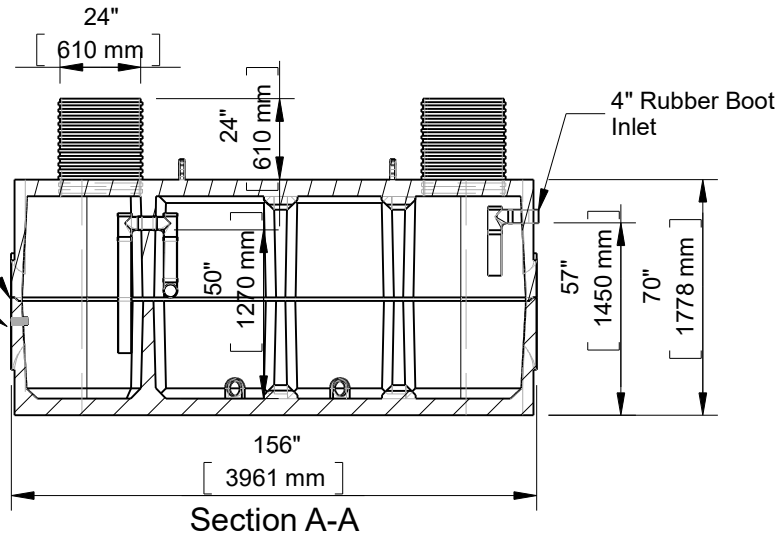


2000 Imp. Gallon 6 Bed Septic (11021AB)



1/2" x 1-1/2" Butyl
Rubber Seal
2" Brass FIPT
Coupler

24" Ultra-Rib PVC



This drawing is the property of Alberta Wilbert Sales Ltd.
There is no guarantee or representation to the user as to the suitability
or reliability of this data for any purpose. The user accepts the data
"as is" and assumes all risks associated with its use.

Edmonton
16910-129 Ave. NW
Edmonton, AB
T5V 1L1
Toll Free: 1-800-232-7385
Bus: (780-447-2222
Fax: (780) 447-1984

Calgary
4315-58 Ave. S.E.
Calgary, AB
T2C 1Y3
Bus: (403) 230-1666
Fax: (403) 276-4176

Number of Bedrooms: 6
Working Capacity: 1430 Imp Gallons
Pump Chamber: 475 Imp. Gallons
Weight: 21000Lbs. / 9525Kg.
Dosing Volume: 9.5 Gallons / Inch

CSA approved for up to 5 meters of burial.
(1) 2" Brass FIPT Coupler

Checked by

Item

11021AB

Date

11.26.22

Scale

File name

2000 Imp. Gallon 6 Bed Septic
(11021AB)

For Discussion Only.

Drawn by M.D.