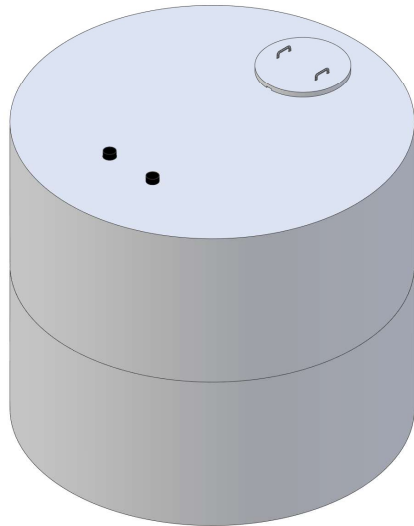
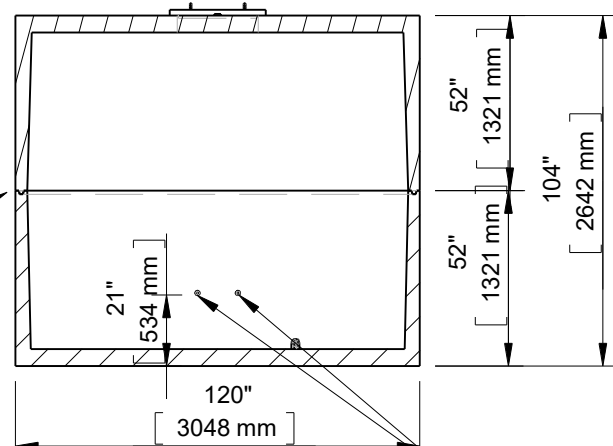




**10Ft Diameter 3300 Gallon 1MH  
Cistern - Holding  
Requires Concrete Extensions  
(11059H)**



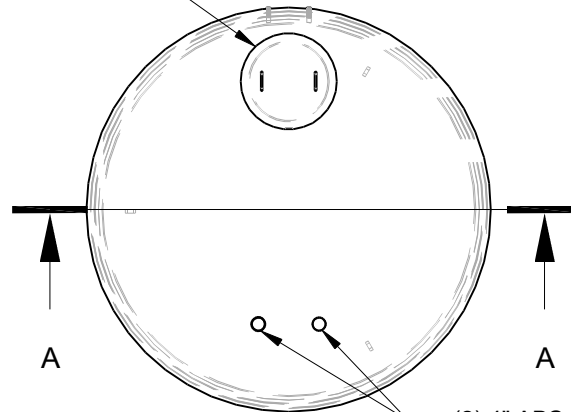
1" x 1" Butyl Rubber Seal



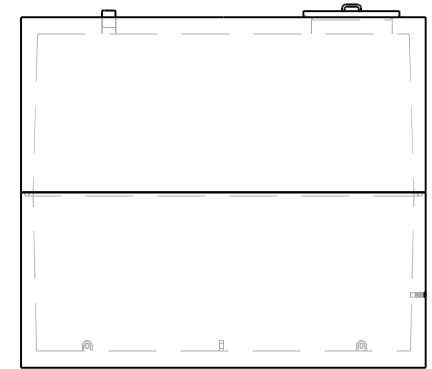
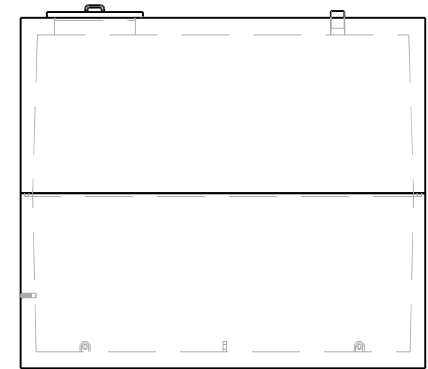
Section A-A

Optional 1-1/4" Brass FIPT Couplers

24" ID Concrete Lid



(2) 4" ABS Couplers



This drawing is the property of Alberta Wilbert Sales Ltd.  
There is no guarantee or representation to the user as to the suitability  
or reliability of this data for any purpose. The user accepts the data  
"as is" and assumes all risks associated with its use.

**Edmonton**  
16910-129 Ave. NW  
Edmonton, AB  
T5V 1L1  
Toll Free: 1-800-232-7385  
Bus: (780-447-2222

**Calgary**  
4315-58 Ave. S.E.  
Calgary, AB  
T2C 1Y3  
Bus: (403) 230-1666  
Fax: (403) 276-4176

Total Capacity: 3300 Imp. Gal. (14982L)  
Gallons / Inch: 35.1 Gal. / Inch (159.6L / Inch)  
Material: Type 50/HS Concrete  
Weight: 24200Lbs. / 10977Kg.  
Model: 10-3300  
B66- CSA approved for up to 3 meters of burial.

|            |        |          |       |
|------------|--------|----------|-------|
| Checked by | Item   | Date     | Scale |
|            | 11059H | 11.26.22 |       |

|           |   |
|-----------|---|
| File name | 10Ft Diameter 3300 Gallon 1MH<br>Cistern Holding (11059H) |
|-----------|---|

|                      |                  |
|----------------------|------------------|
| For Discussion Only. | Drawn by<br>M.D. |
|----------------------|------------------|