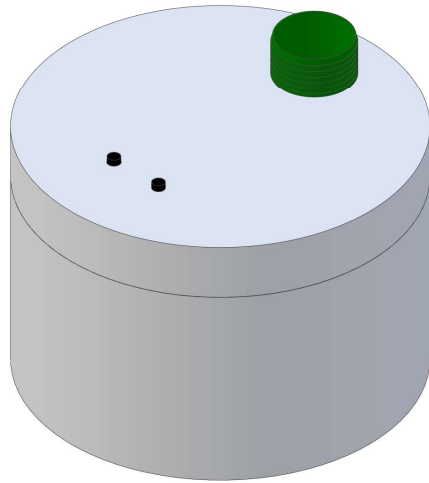
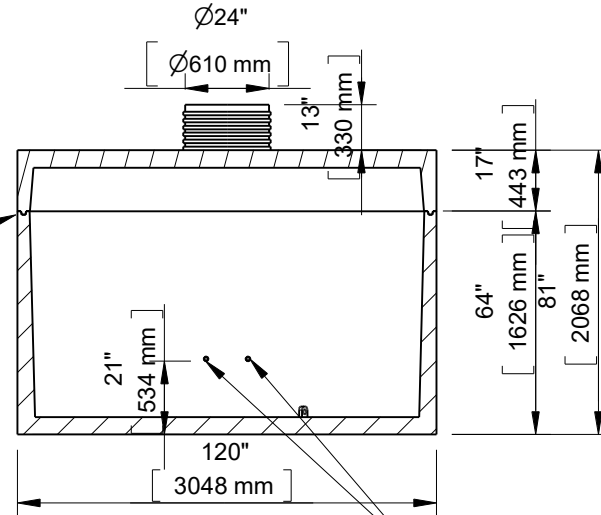




**10 Ft Diameter 2400 Gallon 1GMH  
Cistern Holding  
(11073CG)**



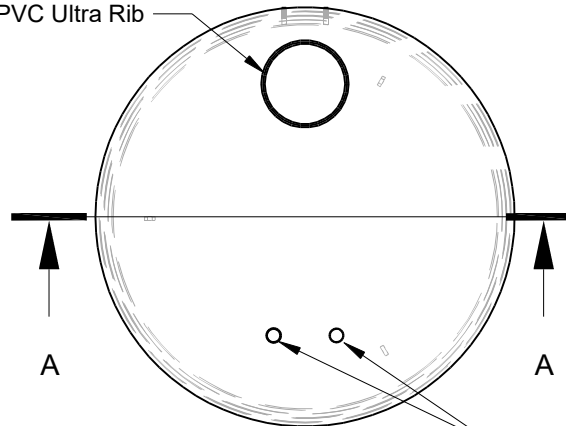
1" x 1" Butyl  
Tape Seal



Section A-A

Optional 1-1/4"  
Brass FIPT Couplers

24" ID PVC Ultra Rib



(2) 4" ABS Couplers

This drawing is the property of Alberta Wilbert Sales Ltd.  
There is no guarantee or representation to the user as to the suitability  
or reliability of this data for any purpose. The user accepts the data  
"as is" and assumes all risks associated with its use.

**Edmonton**

16910-129 Ave. NW  
Edmonton, AB  
T5V 1L1  
Toll Free: 1-800-232-7385  
Bus: (780-447-2222

**Calgary**

4315-58 Ave. S.E.  
Calgary, AB  
T2C 1Y3  
Bus: (403) 230-1666  
Fax: (403) 276-4176

Total Capacity: 2400 Imp. Gal. (10900L)  
Gallons / Inch: 33.9 Gal/Inch (153.7 L/Inch)  
Material: Type 50/HS Concrete  
Weight: 20450Lbs. / 9276Kg.  
Model: 10-2400  
B66- CSA approved for up to 3 meters of burial.

Checked by	Item	Date	Scale
	11073CG	11.26.22	

File name	10 Ft Diameter 2400 Gallon 1GMH Cistern Holding (11073CG)
-----------	--

For Discussion Only.	Drawn by M.D.
----------------------	------------------